

# BCP Library Strategy – Creating a Sustainable Future

## Appendix 1

### Key Library Information

There are 24 Libraries across BCP.

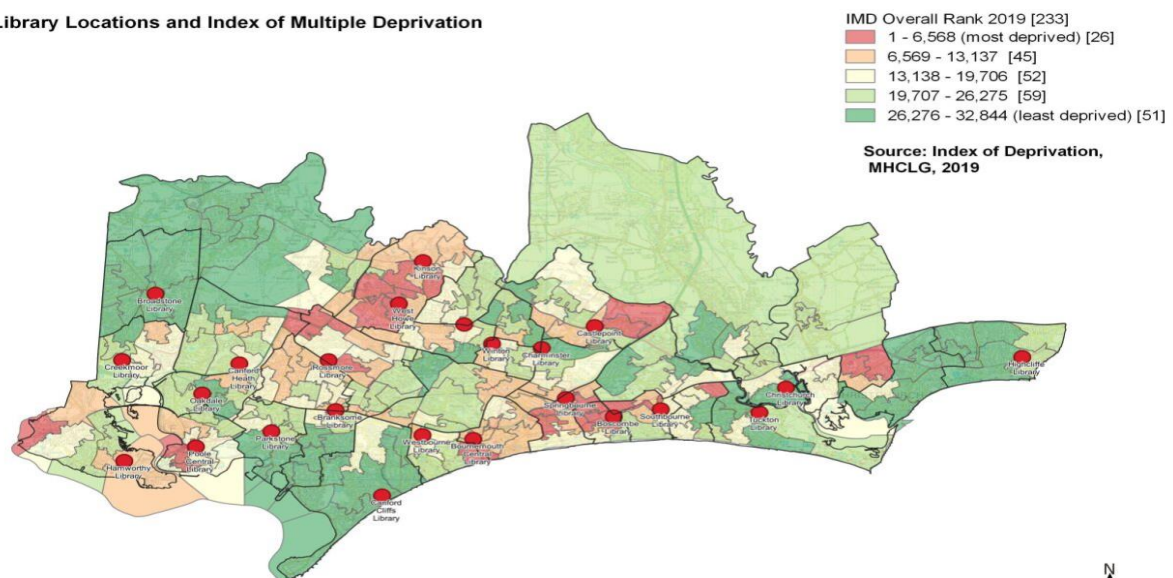
- 12 in Bournemouth
- 10 in Poole
- 2 in Christchurch

The Christchurch and Poole Libraries have been converted to library hub buildings to accommodate space for BCP staff to work from. They also host a Customer Service desk and Citizens Advice.

Christchurch Library Hub also hosts a registrar's service and part of the building is used by Skills and Learning.

The location of BCP Libraries can be seen below.

Library Locations and Index of Multiple Deprivation



Created by the Insight Team © Crown Copyright - All rights reserved, BCP Council 100019829, 2023

**The distance between libraries can be seen below:**



**It should be noted the distance is measured as a straight line and does not represent travelling distance.**

## **Lease and Occupancy Arrangements**

### **BCP Lease arrangements with third parties:**

Boscombe and Branksome Libraries have lease arrangements with Aster Housing.

Poole Library is leased from Legal & General

Bournemouth Library is funded as a PFI with the PFI running until 2032.

### **BCP let library space to third parties:**

Canford Cliffs Library – 1<sup>st</sup> floor is leased to Poole Maritime Trust

Parkstone Library – 1<sup>st</sup> floor is leased to Poole Flying Boats Celebration Limited

Bournemouth Library – has space let to Citizens Advice

### **Library Space is also used by BCP Service Units:**

Castlepoint Library – top floor space is occupied by Community Safety Team

Kinson Hub – top floor is being occupied by BCP Homes and Aspire Adoption

Rossmore Library – top floor has been reconfigured into an ASC training suite with hoists etc.

Christchurch Library – specific areas are used and managed by Skills and Learning.

## Current Opening hours for BCP libraries

**Band 1 – 55 hours. These libraries will be customer services Hubs so need to open at 9am**

Library	Monday	Tuesday	Wednesday	Thursday	Friday	Saturday
Bournemouth	9-7	9-6	9-7	9-6	9-6	9-5
Christchurch	9-6	9-7	9-6	9-7	9-6	9-5
Poole	9-6	9-6	9-6	9-6	9-6	9-5

**Band 2 – 46 hours (Kinson Library is already a Hub so 49 hours)**

Library	Monday	Tuesday	Wednesday	Thursday	Friday	Saturday
Kinson	9-7	9-5	9-7	9-5	9-5	9-2
Boscombe	9.30-7	9.30-5	9.30-5	9.30-7	9.30-5	9.30-2
Broadstone	9.30-7	9.30-5	9.30-5	9.30-7	9.30-5	9.30-2
Castlepoint	9.30-7	9.30-5	9.30-5	9.30-7	9.30-5	9.30-2

**Band 3 – 37.5 hours (Rossmore & Hamworthy will become multi service venues so 41 hours)**

Library	Monday	Tuesday	Wednesday	Thursday	Friday	Saturday
Charminster	9.30-5	9.30-7	Closed	9.30-7	9.30-5	9.30-1
Hamworthy	9.30-7	9.30-5	9.30-7	9.30-1	9.30-5	9.30-1
Highcliffe	9.30-7	9.30-5	Closed	9.30-7	9.30-5	9.30-1
Rossmore	9.30-7	9.30-5	9.30-7	9.30-1	9.30-5	9.30-1
Southbourne	9.30-5	9.30-7	Closed	9.30-7	9.30-5	9.30-1
Tuckton	9.30-7	9.30-5	Closed	9.30-7	9.30-5	9.30-1
Westbourne	9.30-5	9.30-7	Closed	9.30-7	9.30-5	9.30-1
Winton	9.30-7	9.30-5	Closed	9.30-7	9.30-5	9.30-1

**Band 4 – 31.5 hours (except Ensbury Park 21.5 hrs, Springbourne 28.5 hrs).**

Library	Monday	Tuesday	Wednesday	Thursday	Friday	Saturday
Branksome	9:30-1, 2-5	9:30-1, 2-7	9:30-1, 2-5	Closed	9:30-1, 2-5	9:30-1
Canford C	9:30-1, 2-7	9:30-1, 2-5	9:30-1, 2-5	Closed	9:30-1, 2-5	9:30-1
Canford H	9:30-1, 2-5	9:30-1, 2-7	Closed	9:30-1, 2-5	9:30-1, 2-5	9:30-1
Creekmoor	9:30-1, 2-5	9:30-1, 2-7	Closed	9:30-1, 2-5	9:30-1, 2-5	9:30-1
Ensbury P	Closed	9:30-1, 2-7	Closed	9:30-1, 2-5	2-5	9:30-1
Oakdale	9:30-1, 2-5	9:30-1, 2-5	9:30-1, 2-7	Closed	9:30-1, 2-5	9:30-1
Parkstone	9:30-1, 2-5	9:30-1, 2-7	Closed	9:30-1, 2-5	9:30-1, 2-5	9:30-1
Springbourne	9:30-1, 2-5	9:30-1, 2-7	Closed	9:30-1, 2-5	9:30-1	9:30-1
West Howe	9:30-1, 2-5	9:30-1, 2-7	Closed	9:30-1, 2-5	9:30-1, 2-5	9:30-1

## LIBRARY ACTIVITY

In 2022/23:

1,027,612 people visited BCP Libraries.

6,176 new people joined.

1,044,810 items were loaned.

ISSUES 2022-23	
Adult Non-Fiction	70590
Adult Fiction	196420
Large Print Non-Fiction	2059
Large Print Fiction	20437
Junior Non-Fiction	22228
Junior Fiction	173279
Teen	9776
Audio CDs (Adult)	10201
Audio CDs (Junior)	841
DVD	1695
Music CD	194

Libraries hosted 9085 Activities or Events in 2022/3.

Events support the Universal Offers which guide delivery nationally and enable libraries to meet their statutory duties.

Take up of events were as follows:

- Adults - 48,624.
- Teens - 1,035.
- Children - 52,287.

### Typical events include:

Health	Knit & Natter	Digital	Computer Buddy Session
	Coffee Morning		Computer Basics / iPad
	Adult Crafts & Games		Other Digital Event
	Shared Reading	Reading	Adult Reading Group
	Health Event		Adult Author Events
Children's	Playschool / Nursery Visit		Other Reading Events
	School Class Visit	Culture	Culture Events
	Children's Games Sessions		Jobs Club
	Children's Crafts	Information	Homework Help
	Book start Rhyme time		Adult Learning/Other Courses
	Book start Storytime		Information Event
	Toy Library Stay & Play		
	Children's Reading Group		
	Teen Reading Group		
	Summer Reading Challenge		
	Children's Author Events		
	Children's Digital		
	Other Children/Teen Events		

### Partners who use libraries

Dorset Police	Memories	Youth Justice Service
Ward councillors	Samaritans	Dorset Police
Bournemouth Towns Fund	Castlepoint Marketing Team	Gateway, BH9 community group
Aspire Project	CAB	Christchurch Foodbank
The Old School House	Win on Waste	Christchurch BID
Amphibian and Reptile conservation Trust	Shared Reading Group	Somerford Family Hub
Bournemouth Symphony Orchestra	The Memory Box Project	Christchurch Strollers
Bournemouth University	Abbeyfield	Christchurch Town Council
Dorset Police	IT Volunteer	Christchurch History Society
Dorset History Centre	CAN	Christchurch Foodbank
CAB	University Hospital Dorset	BCP Health Walks
BCHA	Stories from the Streets	Highcliffe Scout Group
Skills and Learning	Garden Volunteers	RNLI
Samaritans	Branksome Community Fridge	New Forest Ranger
BCP Communities Team	Rossmore Community Fridge	Woolf Space group
Loving Earth Project	Citrus Singers	Dorset Healthcare - Speech & Language therapy
Community Fridge	Vitality (learning disabilities group)	BCP Warm Spaces
Read Easy	Healthy walks group	People First Forum – Safe Places Scheme
Sunbeams Nursery	Shared Reading Group	Migrant Help
Councillor Surgeries	Explore Learning	Democratic Services – Polling Stations
U3A	Abbeyfield	BCP Consultation & Research Team – Survey distribution
Dorset Police	Autism Unlimited	Hello Springbourne
Tesco Community Champions	Southbourne Dementia Alliance	BCHA
Peter Jones-dementia advice Broadstone in Bloom	Dorset Combined Justice Service	Hello Eastcliff Community group
Explore Learning	Storycises Physios	Dorset History Group
CAN	Into Action (DAA)	
BCHA Digital	Gambia Association	
Grandmaster William Crouch	WEA	

### Libraries also have active ‘Friends Groups’

- Friends of Canford Heath Library
- Friends of Canford Cliffs Library
- EnPALS – Friends of Ensburry Park Library
- Friends of Christchurch & Highcliffe Libraries

## Budget

Staffing	£3,053,056.00
Activities	£7,000.00
Archives	£312,200.00
Maintenance	£111,900.00
Overheads (Breakdown below)	£122,000.00
Stock (Breakdown Below)	£342,300.00
Catering *	£14,144.00
Rates& utilities	£677,800.00
PFI	£1,580,000.00
Summer Reading Challenge	£7,000.00

£6,227,400.00

### Staffing

7 Managers (2 of these job share, i.e.: 6 posts)  
 4 FTE Seniors (Hubs and Bournemouth Library)  
 2 Literacy Officers (job share – 1 post)  
 c. 124 (various hours) Library Assistants / Saturday Assistants  
 1 café Supervisor  
 2 FTE Business support  
 2 FTE stock support

The Number of library assistants at each branch is determined by band of library, minimal operating numbers (to mitigate lone working) and opening hours. Minimal operating numbers mean vacancies need to be filled via a relief bank (no vacancy drag) and sickness/other absence needs to be covered).

Volunteers gave just short of 5,240 hours to libraries in 2022/3

1502.25 hours from Adults  
 1634 hours from Young People (teens)  
 981.75 on the Home Library Service

### **Overheads Breakdown:**

Cleaning	76,100
Equipment	15,000
First Aid	100
Furniture	4,800
Ground Maintenance	3,000
Home Library	63,900
ICT	85,700
Income (overdues, music/dvd hire, reservations, ILL, resale, printing/copying, room hire, café sales)	-119,300
Licenses	3,500
Payment's	-23,800
Postage	11,000
Printing	-10,700
Security	1,900
Stationary	100
Waste disposal	10,600
Service charges	500
Legal fees	-1,100

### **Stock Breakdown:**

Alternative Formats (Adult large print fiction and non-fiction: Adult and children's talking books)	£27,000
Books (Adults, Children, Fiction, Non-Fiction, Reference etc)	£191,500
DVDs	£1,000
Newspapers/Periodicals	£15,000
Overheads (library cards, tags, plastic covers etc)	£7,000
Subscriptions (online resources, e.g.: Newspapers, Magazines, Heritage, E-books, Ancestry, Music Streaming and well as organisational subscriptions to runs the service (British Library, Libraries Connected etc)	£100,000
Resale items (educational wall charts and workbooks)	£1,000
Equipment	



## Buildings

### Energy Efficiency

Most of the Libraries have an energy efficiency rating of D and above (D is the average rating for UK Homes).

The exceptions are Oakdale and Southbourne (E), although we do not have energy ratings listed for five of the libraries.

### Condition

Our stock condition surveys are typically over 5 years old and as such represent an aging picture of the condition of our library buildings. Importantly, the information provided from these reports will now be out of date.

In many instances we are fire-fighting repairs which are because of problems highlighted some years ago but have not had the required investment to mitigate them.

Many libraries have structural issues as well as mechanical failure, especially with heating systems.

A= Very Good Condition; B = Good Condition; C= Average Condition; D = Poor Condition; E= Very Poor Condition

Library	Year Surveyed	Building	Electrical	Mechanical
Canford Heath Library	2014	Combined survey: generally satisfactory but large number of advisories; the most pressing marked at C were the boiler, roof, windows, general redecoration; external areas; fire alarms. <a href="#">Externals decorated 2023</a>		
Boscombe Library Building & Land	2018	B - Satisfactory: only the flat roof graded as C.  <a href="#">Roof being replaced November 2023</a>	B - Satisfactory: all items graded at B with a note that life cycle of electrical systems such as lighting, intruder alarm, fire alarm, platform lift, etc might be reached within 5 years	B - Satisfactory: only item mentioned was the boiler which might need replacing within 5 years plus.
Bournemouth Library	N/A	PFI arrangement - Investment means the asset will be handed over in near new condition.		
Poole Central Library	2013	Combined survey: Block 1 - numerous areas classed as C; Block 2 also had several areas of concern, one calling for a structural engineer to inspect.		
Ensburypark Library	2018	D - Bad: Only area marked as C was the roof  <a href="#">Damp works completed 2022/3</a>	B - Satisfactory: only area noted life cycle of auto door closers due to expire	B - Satisfactory: no works identified

Library	Year Surveyed	Building	Electrical	Mechanical
Southbourne Library	2018	B - Satisfactory: Main issues revolved around external areas, fencing and the stonework.	B - Satisfactory: comments revolved around remaining life of assets: 10 years for lighting and fire alarm, 7 years for the auto-door operator and 5 years for the emergency lighting.	C - Poor: boilers obsolete. Classed as D2.
Springbourne Library	2018	B - Satisfactory: areas of concern were decoration, flooring, and external brickwork. <a href="#">Structural defects being remedied Nov 23</a>	B - Satisfactory: comments revolved around life cycle of assets: 10 years for lighting and fire alarm, 5 years for some lighting and intruder alarm.	B - Satisfactory: However, 1 of the boilers was classed as D2.
Tuckton Library	2018	B - Satisfactory; however, general condition classed as C. Some external tarmac classed as D.  <a href="#">Tarmac deteriorated Further</a>	B - Satisfactory: comments revolved around life cycle of assets. 10 years for auto door operator, 5 years for lighting and fire alarm.	C - Poor: boilers obsolete. One of them classed as D1. Replacement cost estimated as £48k in 2018.
Branksome Library	2014	Combined Survey: overall satisfactory but ceilings graded at C; also, decoration, ventilation, damage to plaster around door of office; two areas graded at D - external wooden doors.		
Broadstone Library	2014	Combined survey: generally, satisfactory but areas classed as C were ceilings damaged by water ingress from flat roof, ivy growing on external walls, decoration, external gates and planter, external brickwork, slabs, cracks in walls. <a href="#">Porch, Roof, Window and Boiler works – being completed Nov 23 – Feb 24</a>		
Canford Cliffs Library	2014	Combined survey: large number of areas graded at C and in need of attention; areas noted include roof tiles, damp in areas, redecoration, guttering, external areas, external redecoration. <a href="#">Storage Heaters ineffective</a>		
Hamworthy Community Library	2013	Combined survey: Main areas needing attention were internal decoration and external areas where encroachment of vegetation was noted.		
Kinson Hub (Library)	2018	B - Satisfactory: minimal works. Redecoration required within 5 years and the flooring could require replacement in 5 years +.	B - Satisfactory: emergency light fittings only thought to have 1 year of life remaining; intruder alarm, fire alarm, and lift 10 years; lighting 5 years.	B - Satisfactory: The library area noted that within 5 years or 5 years + some of the equipment would reach the end of its life cycle - boilers, heat pump, air extract.

Library	Year Surveyed	Building	Electrical	Mechanical
Northmead House (including Creekmoor Library)	2013	Combined survey: part of Northmead House which also contains Admin Offices. Library areas of concern were external redecoration, suspended ceiling tiles, fire alarm, roof, walls, doors, windows, gutters.  Loading area for Libraries West with associated stock sorting space.		
West Howe Library	2018	B - Satisfactory: areas of concern internal decoration and external tarmac.	B - Satisfactory: however, no emergency lighting in place and graded as D1. Life cycle of other assets: 15 years for wiring, 10 years for auto door operator, 7 years for lighting	B - Satisfactory: but both boilers and radiators classed as life expired and graded as c2
Westbourne Library	2018	B - Satisfactory: only area of concern noted was external brickwork.	B - Satisfactory: life cycle of assets as follows: 10 years for auto door operator, 7 years for intruder alarm, 5 years for lighting, emergency lighting, intruder alarm and fire alarm, 1 year for fire alarm and emergency lighting.	B - Satisfactory: however, boilers only had two years life remaining, and extract systems 5 years.
Winton Library 624 Wimborne Road Main Building and Land	2018	B - Satisfactory: external brickwork and stone required attention; decoration of external metal work.	B - Satisfactory: life cycle of assets as follows: 7 years for auto door operator, 5 years for lighting, fire alarm, intruder alarm  Structural Works Needed	B - Satisfactory: however, both boilers life expired, one of them classed as D1.
Castlepoint Library	2018	B - Satisfactory: need for redecoration and replacement of carpet tiles marked as C.	B - Satisfactory: life cycle of items such as intruder alarm, fire alarm, lighting, and auto door system.	B - Satisfactory: no areas classed below B. AHUs and boiler likely to need attention
Charminster Library	2018	B - Satisfactory: areas of concern - flat roof, external walls, external tarmac. Roof works needed	B - Satisfactory: but all electrical systems graded as needing attention within 5 years.	B - Satisfactory: however, boilers identified as at end of life, and asbestos in cold water storage and expansion tank marked as D.

Library	Year Surveyed	Building	Electrical	Mechanical
Rossmore Community Library	2014	Combined survey: items marked as C (Poor) were relatively low value. While some items were classed as B it was noted that many of them were 20 years + old		
Oakdale Library	2014	Combined survey: areas of concern include light fittings, external walls bowing due to age, external redecoration, ceiling tiles, area of roof,		
Parkstone Library and Offices	2011	Combined surveys for Blocks 1 and 2. Block 1 generally described as work and tatty, referring to the standard of decoration and plaster work; Block 2 - no major issues.		
Christchurch Library	2018 & 2019	Not scored but external areas identified as C1 and gates as C2.	2019 - combined survey which overall marked the building as B - Satisfactory. However, numerous areas of concern noted re mech services, roof, windows, carpet tiles, radiators, damp on brickwork, suspected leak, risk of scolding, external brickwork cracked, stairs to basement.	
Highcliffe Library	2020	No record	No record	B - Satisfactory: gas boilers marked as B4 <a href="#">External decking repaired 2023</a>

### Library Space and Facilities

Library	Library Space	Offices	External Library Space	WCs	Kitchenettes	Lifts
<b>Canford Cliffs Library and Offices</b>	<b>Ground Floor:</b> 1 x main library @ 63m <sup>2</sup> ; 1 x community/display area @ 18m <sup>2</sup> ; 1 x children's library @ 7m <sup>2</sup> ; <b>First Floor:</b> 1 x library area @ 14m <sup>2</sup> ; 1 x computer room @ 18m <sup>2</sup> .	GF: 1 x workroom @ 11m <sup>2</sup> . 1st Floor: 1 x office @ 18m <sup>2</sup> .	Ornamental garden but in addition there is a wooded area to the side of this which is unused.	<b>GF:</b> 1 x staff/accessible toilet. No separate public toilet.  <b>First floor:</b> 1 x bathroom.	GF: 1 x staffroom @ 8.8m <sup>2</sup> . First floor: 1 x kitchen @ 4.1m <sup>2</sup>	
<b>Castlepoint Library</b>	1 x library area @ 274m <sup>2</sup>	1 x workroom/office @ 20.7m <sup>2</sup>	None	1 x male toilet; 1 x female toilet; 1 x accessible toilet for public use.  1 unisex staff toilet	1 x staff/kitchen @ 13.9m <sup>2</sup> ; 1 x cleaner store @ 3.7m <sup>2</sup>	
<b>Charminster Library</b>	1 x adult library @ 197m <sup>2</sup> ; 1 x children's library @ 116m <sup>2</sup> ;	1 x office @ 9m <sup>2</sup> ; 1 x office @ 32m <sup>2</sup> ; 1 x Home Library Services @ 46.9m <sup>2</sup>	Grass area at the front of the library but fronts the pavement and not useable	1 x male toilet; 1 x female toilet; 1 x accessible toilet for public use.  1 unisex staff toilet	1 x Kitchen @ 14.5m <sup>2</sup>	
<b>Poole Central Library &amp; 4th Floor Admin Offices</b>	2nd floor: 1 x library area @ 778.9m <sup>2</sup> , 1 x resource area @ 36.4m <sup>2</sup> , 4th floor: 1 x welcome area @ 116.5m <sup>2</sup> ; 1 x back office @ 8.1m <sup>2</sup>	2nd floor: 1 x staff office @ 53.2m <sup>2</sup> , 4th floor: 1 x main office @ 170.7m <sup>2</sup> , 1 x office @ 18.5m <sup>2</sup> , 1 x office @ 16.7m <sup>2</sup> ; 1 x main office @ 214.6m <sup>2</sup> , 1 x main office @ 99.4m <sup>2</sup>	None	3rd floor: 1 x male toilet suite; 1 x female toilet suite; 1 x shower. 4th floor: 1 x public toilet, 1 x staff toilet, 1 x accessible toilet.	2nd floor: 1 x staffroom @ 22.4m <sup>2</sup> ; 1 x kitchen @ 10.8m <sup>2</sup> . 4th floor: 2 x kitchens @ 3.4m <sup>2</sup> and 5.1m <sup>2</sup> ; 1 x kitchen @ 7.5m <sup>2</sup>	1 x lift

### Library Space & Facilities

Library	Library Space	Offices	External Library Space	WCs	Kitchenettes	Lifts
<b>Ensburry Park Library</b>	1 x library area @ 45.1m <sup>2</sup>	None	Small rear garden with garden room	1 x staff toilet. No separate public toilet.	1 x kitchen @ 6.9m <sup>2</sup>	
<b>Hamworthy Community Library</b>	1 x library area @ 389m <sup>2</sup>  CAFE	1 x office @ 28.0m <sup>2</sup> ;	Small rear garden with artificial grass accessed via through back or library or side gate	1 x staff toilet unisex. Public - 1 x accessible toilet; 2 x unisex toilets; 2 x children's toilets.	1 x staffroom @ 13m <sup>2</sup> , 1 x kitchenette @ 1.3m <sup>2</sup>	
<b>Kinson Hub (Library)</b>	Ground floor: 1 x library area.	Ground floor: 1 x office /workroom; 1 x children's centre (unoccupied). First floor: 1 x Housing Landlord open office; 2 x offices Housing landlord Services, 1 x open office Aspire Adoption Services, 1 x office adoption service;	None	Ground Floor: 1 x male toilet, 2 x female toilets; 1 x accessible toilet with changing places changing facility. 1 x accessible toilet;  2 children's toilets.  First Floor: 1 x shower, 1 x accessible toilet, 1 x female toilet, 1 x male toilet	1 x staff kitchen in Children's Centre;	1 x lift
<b>Northmead House (including Creekmoor Library)</b>	1 x 174.3m <sup>2</sup>	1 x office @ 17.1m <sup>2</sup> ; 1 x office @ 24.9m <sup>2</sup> ; 1 x office @ 19.8m <sup>2</sup> ; 1 x office @ 40.7m <sup>2</sup> ; 1 x office @ 9.9m <sup>2</sup> ; 1 x office @ 12.1m <sup>2</sup> ; 1 x office @ 50.9m <sup>2</sup> ; 1 x office @ 40.8m <sup>2</sup> ; 1 x office @ 11.6m <sup>2</sup> ; 1 x office @ 16.9m <sup>2</sup> ; 1 x office @ 8.9m <sup>2</sup> ; 1 x office @ 36.3m <sup>2</sup> ; 1 x office @ 54.7m <sup>2</sup> . FIRST FLOOR: 13 x offices @ 49.6m <sup>2</sup> , 8.9m <sup>2</sup> , 10.3m <sup>2</sup> , 10.6m <sup>2</sup> , 28m <sup>2</sup> , 34m <sup>2</sup> , 14.1m <sup>2</sup> , 13.1m <sup>2</sup> , 15.4m <sup>2</sup> , 36.2m <sup>2</sup> , 13m <sup>2</sup> , 52m <sup>2</sup> , 15.1m <sup>2</sup> . 1 x copy room @ 7m <sup>2</sup> .	None	1 x unisex toilet; 1 x baby change; 1 x accessible toilet; 1 x male toilet; 1 x female toilet; 1 x shower and changing room.  FIRST FLOOR: 1 x male toilet block; 1 x female toilet; 1 x accessible toilet.	1 x staff room @ 12.8m <sup>2</sup> . FIRST FLOOR: 1 x kitchen @ 5.4m <sup>2</sup>	1

### Library Space & Facilities

Library	Library Space	Offices	External Library Space	WCs	Kitchenettes	Lifts
<b>Oakdale Library</b>	1 x 160.2m <sup>2</sup>	1 x office/kitchen @ 13.6m <sup>2</sup>	Fenced garden developed with plants and maintained by volunteer group.	1 x unisex toilet. No public toilet.	1 x staff room @ 7.6m <sup>2</sup>	None
<b>Parkstone Library and Offices</b>	GROUND FLOOR: 1 x 61.8m <sup>2</sup> ; 1 x reference and children's area @ 34.8m <sup>2</sup> ;	FIRST FLOOR: 1 x office @ 42.9m <sup>2</sup> and 1 x office @ 14.5m <sup>2</sup> .	None	GROUND FLOOR: 1 x staff only; No public toilet.	FIRST FLOOR: 1 x staff room @ 14.1m <sup>2</sup>	None
<b>Rossmore Community Library and Learning Centre</b>	GROUND FLOOR: 1 x main library @ 134.1m <sup>2</sup> ; 1 x children's library @ 69.9m <sup>2</sup> ; FIRST FLOOR: 1 x main library @ 180.1m <sup>2</sup>  CAFÉ	GROUND FLOOR: 1 x stock/workroom @ 28.7m <sup>2</sup>	Small garden	GROUND FLOOR: 1 X accessible toilet. FIRST FLOOR: 1 x accessible toilet; 1 x staff toilet.	FIRST FLOOR: 1 x staff room @ 11.8m <sup>2</sup>	1
<b>Southbourne Library</b>	1 x main library @ 176.4m <sup>2</sup> ; 1 x computer area @ 23.8m <sup>2</sup>	1 x staff workroom @ 25.2m <sup>2</sup>	None	1 x accessible toilet 1 x staff toilet	1 x staff kitchen @ 11m <sup>2</sup>	None

### Library Space & Facilities

Library	Library Space	Offices	External Library Space	WCs	Kitchenettes	Lifts
Springbourne Library	1 x main library @ 99.9m <sup>2</sup> ; 1 x computer room @ 28.8m <sup>2</sup>	1 x office @ 10.8m <sup>2</sup>	Pocket Park adjoins the library There is a reading corner behind the library in the park. Maintained by volunteers.	1 x unisex toilet; 1 x staff toilet; 1 x accessible toilet.	1 x staff kitchen @ 10.7m <sup>2</sup> ; 1x kitchen off community room @ 4.9m <sup>2</sup>	None
Tuckton Library	1 x children's library @ 41.2m <sup>2</sup> ; 1 x computer and reference area @ 44.7m <sup>2</sup> ; 1 x main library area @ 43.6m <sup>2</sup> ; 1 x main library area @ 19.1m <sup>2</sup>	1 x office @ 15.5m <sup>2</sup>	large garden	1 x customer toilet; 1 x staff toilet	1 x staff room @ 6.7m <sup>2</sup> ; 1 x kitchen @ 9.4m <sup>2</sup>	None
West Howe Library	1 x main library area @ 184.6m <sup>2</sup>	1 x office @ 11.8m <sup>2</sup>	None	1 x accessible toilet; 2 x unisex toilets. 1 x staff toilet.	1 x kitchen @ 4.6m <sup>2</sup>	None
Westbourne Library	1 x main library @ 313.3m <sup>2</sup>	1 x staff workroom @ 29.2m <sup>2</sup>	None	1 x accessible toilet; 1 x staff toilet	1 x staff room/ Kitchen @ 26.4m <sup>2</sup>	None
Winton Library 624 Wimborne Road Main Building and Land	1 x main library @ 262m <sup>2</sup>	1 x staff workroom @ 23.4m <sup>2</sup>  Childrens Centre (unoccupied)	Small Park next to the library maintained by the Parks team.	1 x accessible toilet; 1 x staff toilet	1 x staff room @ 17.1m <sup>2</sup>	None



### Library Space & Facilities

Library	Library Space	Offices	External Library Space	WCs	Kitchenettes	Lifts
Christchurch Library	Ground Floor: 1 x main library @ 324.3m <sup>2</sup> , 1 x octagonal reading area @ 35.4m <sup>2</sup> ; 1 x computer area @ 52.8m <sup>2</sup> , 1 x children's library @ 79m <sup>2</sup> , 1 x reception area @ 55.8m <sup>2</sup>	Ground floor: 1 x returns office @ 28.1m <sup>2</sup> , 1 x PACE room @ 13.2m <sup>2</sup> , 1 x customer service room @ 14.4m <sup>2</sup> , 1 x registrar office @ 13.4m <sup>2</sup> , 1 x main lobby area @ 27.7m <sup>2</sup> , 1 x work room @ 19m <sup>2</sup> , First Floor: 1 x comms room @ 7.6m <sup>2</sup> , 1 x printer room @ 6.5m <sup>2</sup> , 1 x citizen advice office @ 26m <sup>2</sup> , 1 x AE office @ 11.5m <sup>2</sup> . Second floor: 3 x BCP Hot desking offices @ 17m <sup>2</sup> , 19.6 and 36.7m <sup>2</sup>	Walled library Garden with small area of flat grass.	Ground floor: 1 x accessible toilet; 1 x staff toilet.  First Floor: 1 x accessible toilet.  Second Floor: 1 x accessible toilet; 1 x female toilet block.	First Floor: 1 x kitchen @ 7.5m <sup>2</sup> . Second floor: 1 x kitchen @ 7.8m <sup>2</sup> ; 1 x staff room @ 28.7m <sup>2</sup>	one (Ground to 2nd floor)
Highcliffe Library	1 x library area	1 x office	Small rear garden with decked and gravel areas.	1 x toilet	1 x kitchen	None